

# Forsythe II Prescribed Burn

## Reducing Wildfire Risk and Restoring Landscapes

### About Forsythe II Prescribed Burn

The Forsythe II prescribed burn will be a “broadcast” burn: a burn with planned applications of fire to reduce fuels throughout a pre-determined area. The burn area is located west of Gross Reservoir and east of Nederland and is divided into multiple subunits, each less than approximately 130 acres. The prescribed burn treatments will be implemented over several years. The amount treated per year is dependent on weather, ground conditions, and available resources. Numerous cooperators, including local fire departments, will help implement this burn.



Broadcast burns reduce hazardous fuels from the forest floor.

### Fire's Role on this Landscape

Prescribed burns are one of the best tools we have for reducing risk from wildfire and restoring the landscapes we love and depend on. We live in a fire-dependent landscape. Years of suppressing fires has contributed to overly dense and unhealthy forests, which can fuel large, high-intensity wildfires. Fires reduce and recycle vegetation, thereby decreasing plant competition for limited resources in the forest. Prescribed burns are an attempt to replicate the natural remedy of fire in a planned and organized way.

The goals of the Forsythe II prescribed burn are to reduce hazardous fuels, improve forest health and wildlife habitat, and protect watersheds.

### Managing Risks

#### Conditions for Burning

Before burning can begin, conditions established in the prescription must be met. The prescription outlines specific environmental (e.g. wind speed, relative humidity) and resource (personnel, equipment) conditions that increase the likelihood of achieving the desired objective and minimizing potential negative outcomes.

#### What to Expect

Smoke, flames, and glowing embers are often visible, particularly at night, and are normal during prescribed burns. Residents should expect to see patrols around the perimeter of the unit, during and after the burn. If conditions adversely change during operations, the burn boss will take appropriate action to secure the burn until it is within prescribed parameters. While the use of planned fire to reduce fuels is not without risk, public and firefighter safety is always the number one priority in burning operations.

#### SMOKE INFO



CDPHE.Colorado.gov

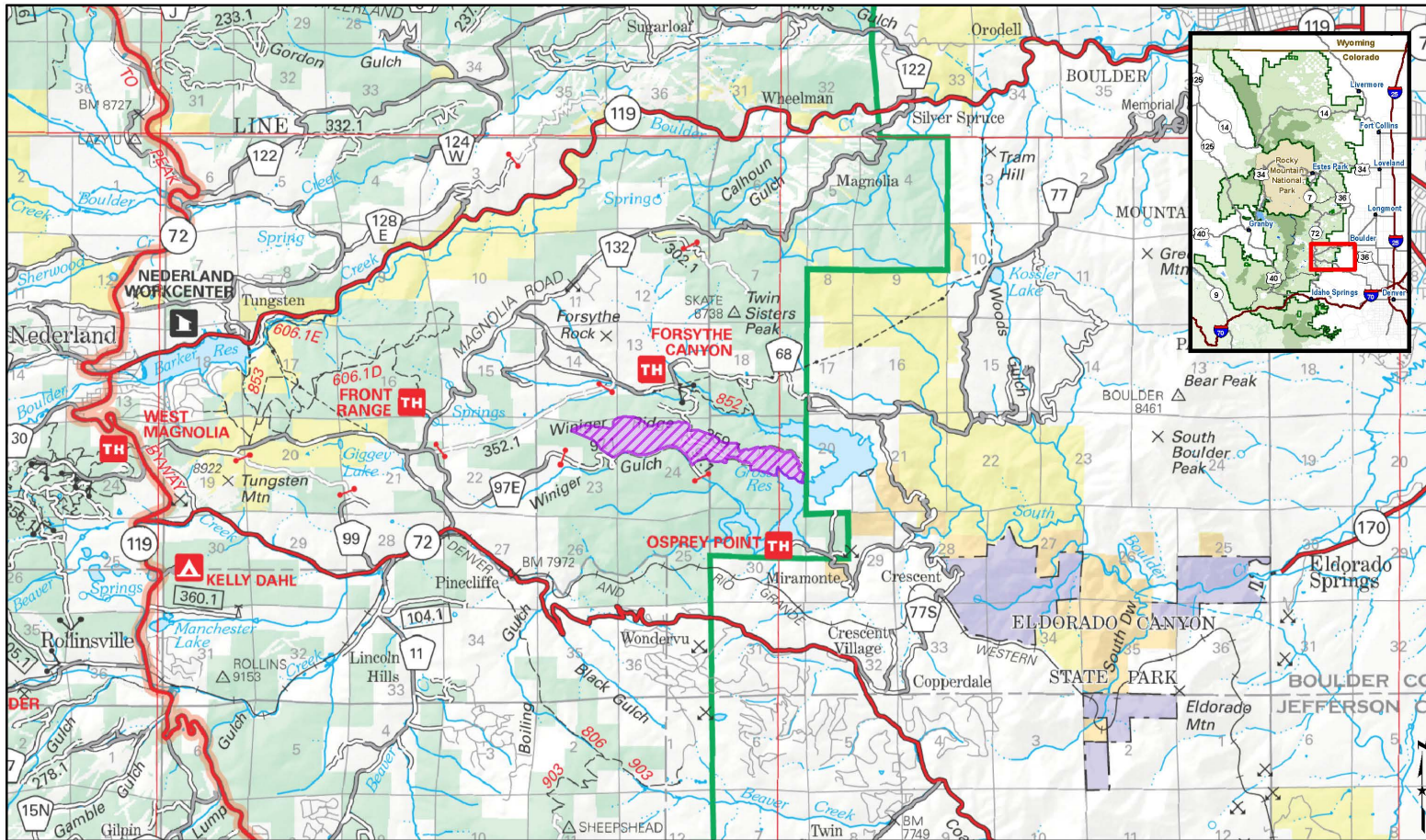
#### Smoke

Prescribed burn smoke may affect your health. However, the degree and duration of impact can be managed during a planned burn. Recreation activities should not be largely impacted; however a temporary closure order may be in place during burning activities.

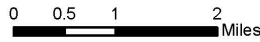
**Areas smoke will likely be visible from include** Lakeshore subdivision, Crescent Village, Crescent Meadows, Gross Reservoir, Walker Park Ranch, Miramonte, Wondervu, Eldorado Canyon State Park, and parts of East Boulder County.



# Forsythe II Prescribed Burn



Forsythe II Burn Area



1:95,000  
dmuse  
4/3/2023

**Disclaimer**

The USDA Forest Service makes no warranty, expressed or implied regarding the data displayed on this map, and reserves the right to correct, update, modify, or replace this information without notification.

## Stay Informed

For information about Forsythe II and other prescribed burns, point your smart phone camera at the images below.

This information can also be found at:  
[www.fs.usda.gov/arp](http://www.fs.usda.gov/arp)

FORSYTHE FAQ  
ON INCIWEB



[inciweb.nwcg.gov](http://inciweb.nwcg.gov)

NEWS & UPDATES

EMAIL SIGNUP



Constantcontact.com

## Stay In Touch

Follow us on Facebook and Twitter:

@usfsarp

Phone: (970) 295-6600

Email:

ARPFireInfo@usda.gov